

TARTAN LAKE GOLD MINE

**Low Risk – Excellent Discovery Potential
Rapid Development Opportunity**

Flin Flon, Manitoba



**SATORI
RESOURCES**

WWW.SATORIRESOURCES.CA

DISCLAIMER

Forward-Looking Information: Certain statements in this presentation may constitute forward-looking information or forward-looking statements (collectively referred to as “forward-looking information”) which involves known and unknown risks, uncertainties and other factors which may cause the actual results, performance or achievements of Satori Resources Inc. (“we”, “us” and “our”), or industry results, to be materially different from any future results, performance or achievements expressed or implied by such forward-looking information. When used in this presentation, such information uses such words as “may”, “would”, “could”, “will”, “intend”, “expect”, “believe”, “plan”, “anticipate”, “estimate”, and other similar terminology. This information reflects our current expectations regarding future events and operating performance and speaks only as of the date of this presentation. Forward-looking information involves significant risks and uncertainties, should not be read as a guarantee of future performance or results, and will not necessarily be an accurate indication of whether or not such results will be achieved. A number of factors could cause actual results to differ materially from the results discussed in the forward-looking information, including, but not limited to, the factors discussed below. We believe the material factors, expectations and assumptions reflected in the forward-looking information are reasonable but no assurance can be given that these factors, expectations and assumptions will prove to be correct. We assume no obligation to publicly update or revise forward-looking information to reflect new events or circumstances, except as may be required pursuant to applicable securities laws or regulations.

In particular, this presentation contains forward-looking information pertaining to the following: exploration programs, targets, resources, our business strategy and objectives and the timing thereof; expectations regarding re-start of our projects, expectations regarding the management of Satori Resources and projected growth of the global market for commodities and anticipated changes to the regulatory landscape surrounding mining and exploration. Our actual results could differ materially from those anticipated in the forward-looking information as a result of the following factors: general economic conditions in Canada and globally; foreign exchange fluctuations; fluctuations in demand for our products and services; competition; liabilities and risks; sourcing, pricing and availability component parts, equipment, suppliers, facilities, and skilled management and technical personnel; match advances of competitors; changes in legislation and the regulatory environment including legislation related to environment; and access to capital and the liquidity of debt and equity markets.

Third Party Information: Certain information contained herein includes market and industry data that has been obtained from or is based upon estimates derived from third party sources, including industry publications, reports and websites. Although the data is believed to be reliable, we have not independently verified the accuracy, currency or completeness of any of the information from third party sources referred to in this presentation or ascertained from the underlying economic assumptions relied upon by such sources. We hereby disclaims any responsibility or liability whatsoever in respect of any third-party sources of market and industry data or information.

Technical Information: UNLESS OTHERWISE INDICATED, THE TECHNICAL INFORMATION PRESENTED HEREIN HAS BEEN REVIEWED BY THE COMPANY’S DIRECTOR, WES HANSON, P.GEO, A QUALIFIED PERSON IN ACCORDANCE WITH NATIONAL INSTRUMENT 43-101 – STANDARDS FOR DISCLOSURE FOR MINERAL PROJECTS. Production statistics at Tartan Lake originated from published monthly production reports for the period 1987 through 1989. These reports indicate that the Tartan Lake Mine produced 35,814 ounces of gold from 252,527 tonnes of ore that averaged 5.78 g/t gold, which Mr. Hanson verifies as being a true historical representation.

With respect to the reference of the pre-mining mineral reserve estimate, Mr. Hanson notes: The estimate was prepared by Kilborn Engineering Limited in 1987. Given the date of the estimate, it is highly probable that the estimate was prepared utilizing manual estimation techniques from plans and sections and industry best practices in 1987. Specific details on the classification of the reserve, procedures and methodology cannot be verified. There is no 43-101 compliant Technical Report supporting the historical Kilborn estimate. Reference to the historical, pre-mining reserve estimates in this presentation is provided solely for context and should not be relied on as a current mineral resource or reserve estimate. Satori does not consider the historical estimate as current, and Satori has not completed sufficient work to verify the mineral resource estimate at this time. The current mineral resource estimate was prepared by Mr. A. Armitage P.Geo, Mr. S. Butler P.Geo, Mr. P. Karelse P.Geo and M. A. Petrovic P. Eng of Mining Plus Canada Consulting Ltd. Messrs. Armitage, Butler, Karelse and Petrovic are qualified persons that are independent of Satori.

The current mineral resource estimate is dated April 5, 2017 and a Technical Report titled: “Satori Resources Tartan Lake Project Technical Report Manitoba, Canada April 2017” is available on www.sedar.com and the Company’s website for review. **This presentation is not to be construed as an offering document.**



TARTAN LAKE GOLD MINE

2,670 hectares in the Flin Flon- Snow Lake Greenstone Belt

One of the largest most prolific greenstone belts in the world

Home of 30 base metals and 8 gold mines

Historic Resource
(200,000 ozs @ 7.0 g/t Au)

Significant underground developed mining galleries

Mine shut 1989 Au below USD\$400/oz

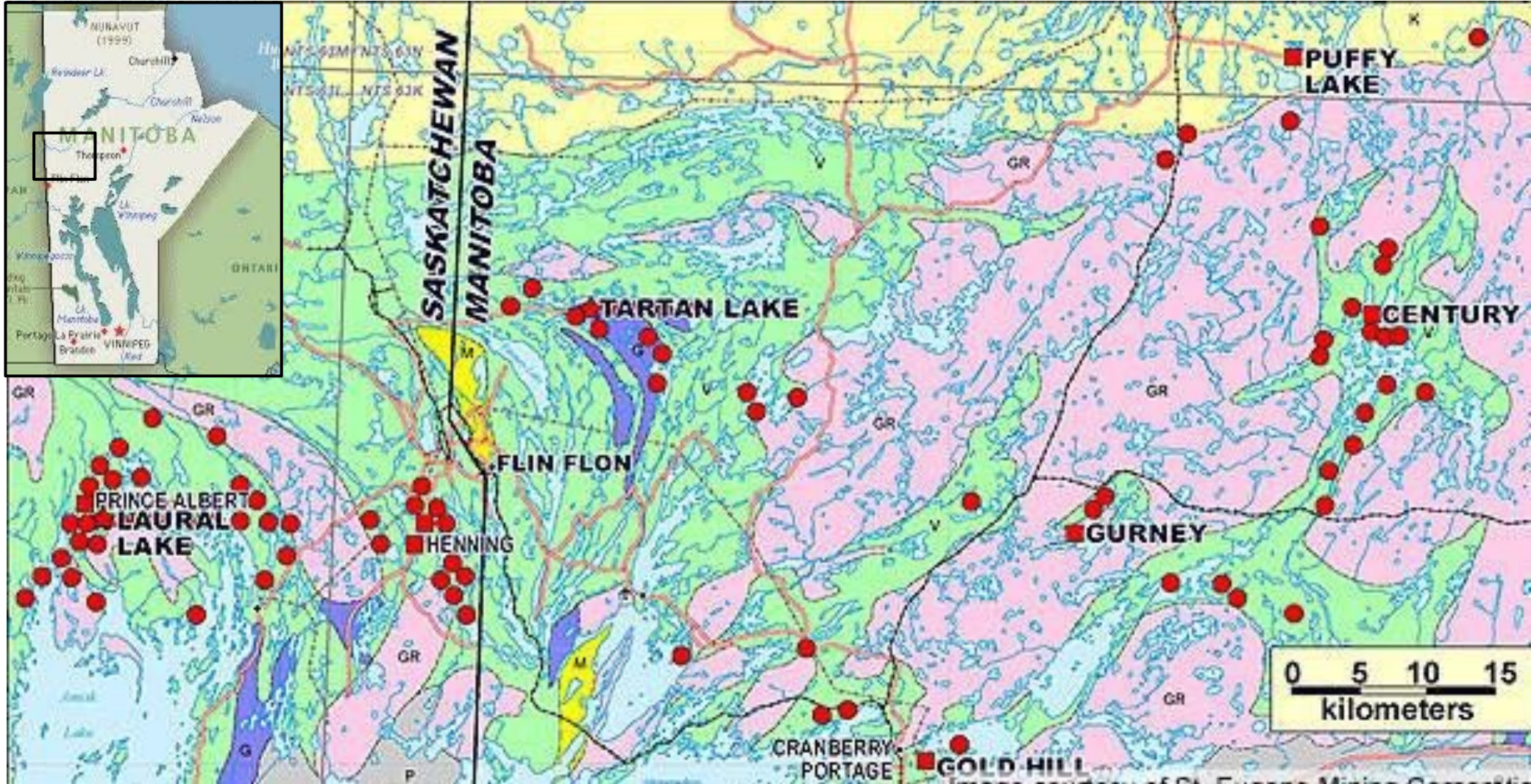
2021 drilling expanded mineralization at Main Zone down 200m



SATORI
RESOURCES

TARTAN LAKE GOLD MINE

2,670 hectares in the Flin Flon- Snow Lake Greenstone Belt

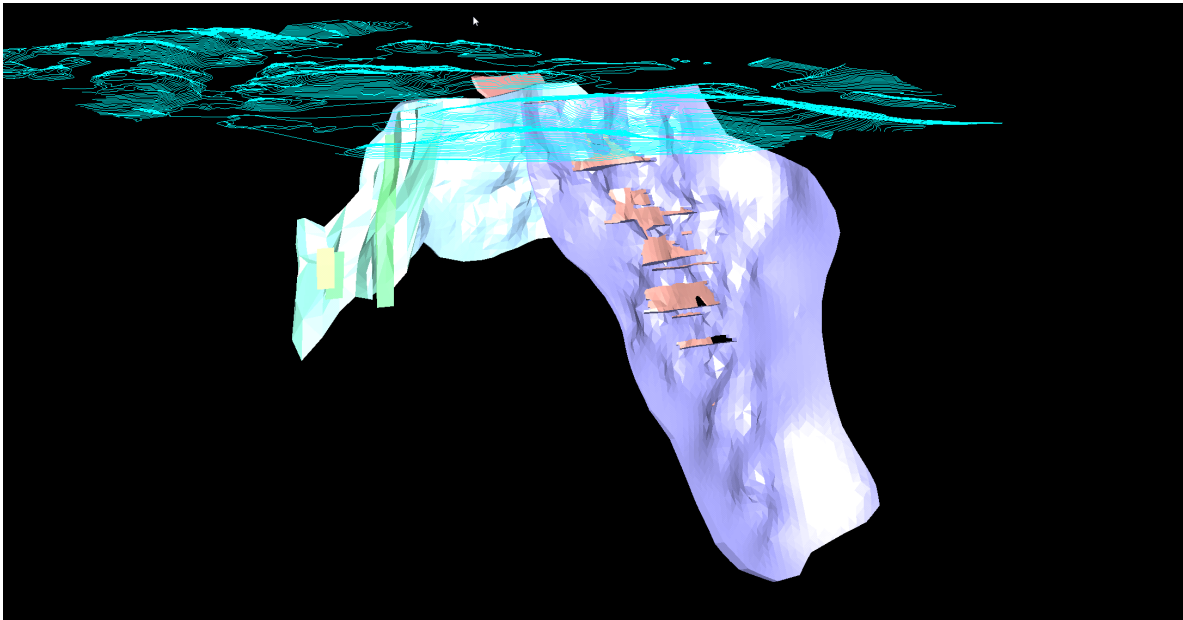


CAPITAL STRUCTURE - BUD.V

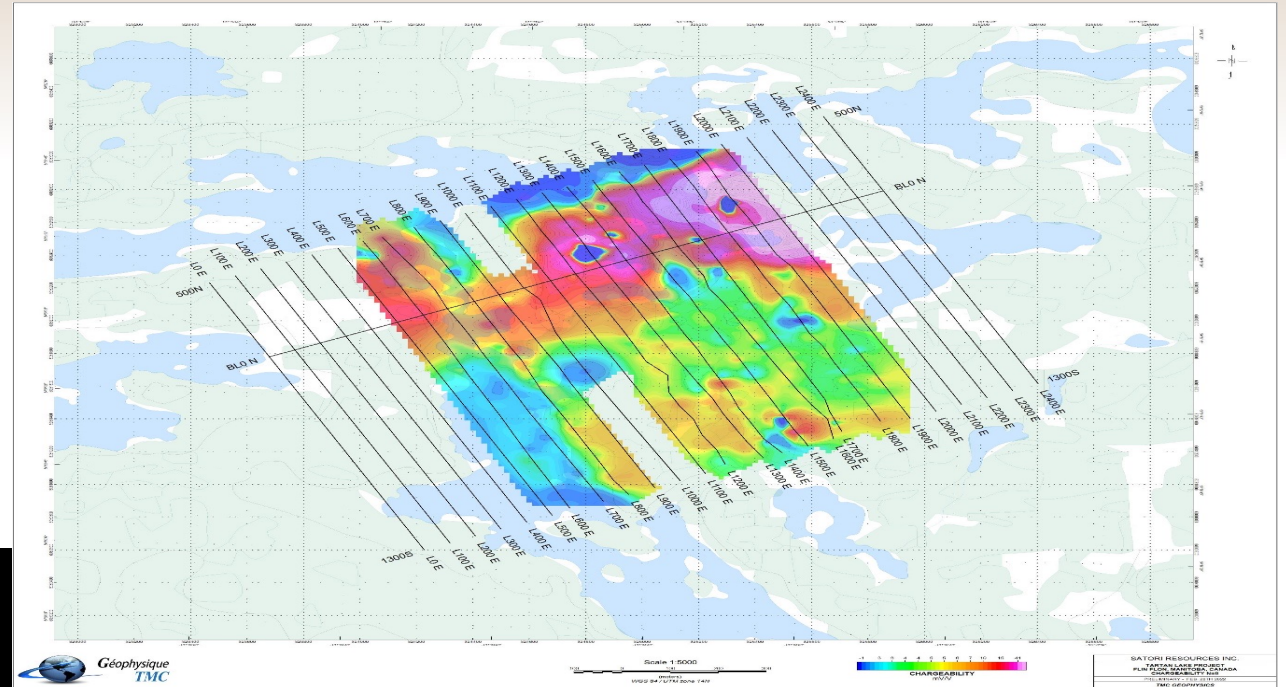
Shares Outstanding
99.3 M

Warrants
Nil

Cash May 2022
\$2M



Wireframes with old mining removed



BOARD & MANAGEMENT

Jennifer Boyle, BA, LLB	CEO, Director
Pete Shippen, CFA	Executive Chairman
Wes Hanson, P.Geo	Director, Technical Cttee
Doug Flegg, CFA, B.Sc. Geo	Director
Jeff Kilborn, H.BA.	Director
Jeff Ackert B.SC. Geol.	Managing Geologist



A FOCUS ON THE PROJECT AND MODERN EXPLORATION CREATE A GREAT OPPORTUNITY AT TARTAN LAKE

The mine was put into production quickly after the discovery of high-grade ore. Little exploration outside of the main deposit. Production was the primary focus.

The mine shut-down when the price of gold fell below \$400 per ounce (in addition to equipment challenges); closure was not as a result of resource grade or quality.

Subsequent owners of Tartan Lake prioritized their funds and attention on other assets in their portfolios that were more advanced.

Current geophysical/geological tools and Satori's desktop studies set the stage for 2021 target selection, returning some of the highest grades ever reported at the project.

The project is road accessible and in a mining jurisdiction with significant underground infrastructure including grid power – this puts Satori in a favourable position.

DUAL TRACK STRATEGY TO ADVANCE TARTAN

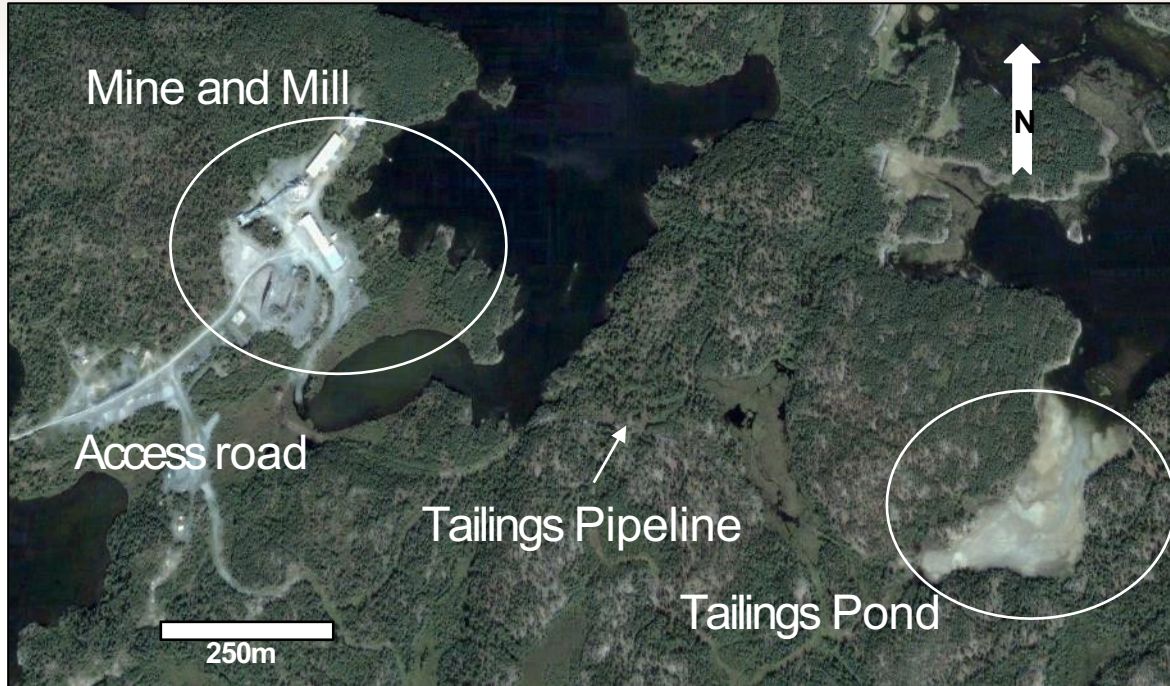


**Expanding existing resource, and
drill testing targets outside of
mine site area**



**Evaluating permitting
requirements and site-
underground infrastructure**

EXISTING INFRASTRUCTURE



- 500 tpd mill complex (requires refurbishment)
- 2,100 metre ramp (developed six Levels of decline to 310 meters)
- Vent raise from surface down to 260 Level

- Developed stopping areas
- Hydro power intact and operational
- Road access
- Exploration database and tailings facility

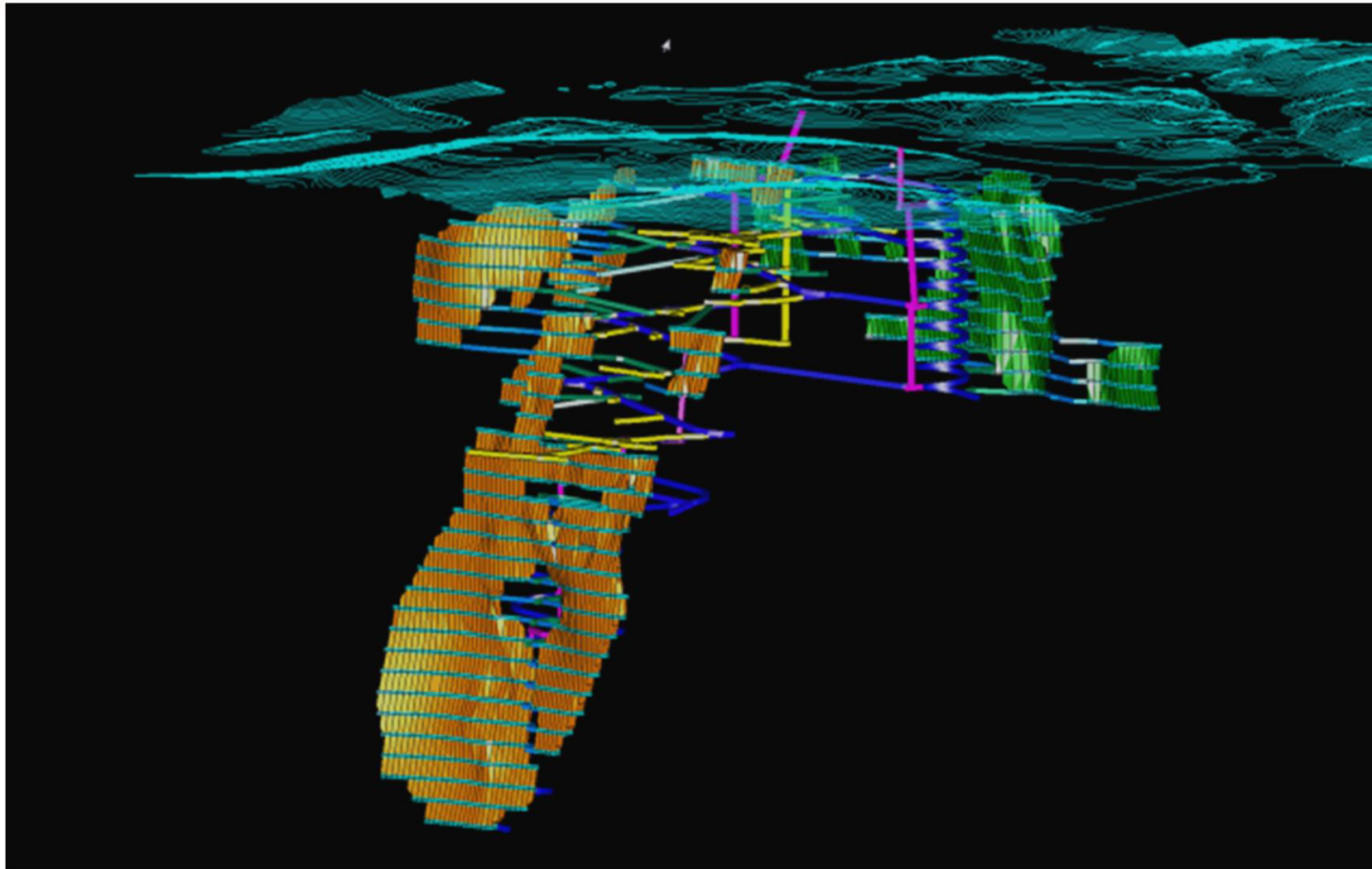
MINERAL RESOURCE (FEB 2017)

	2.0 g/t Cut off	3.0 g/t Cut-off*	4.0 g/t Cut-off	5.0 g/t Cut-off
Grade (g/t Au)	5.0 (indicated) 3.7 (inferred)	6.3 (indicated) 4.9 (inferred)	7.6 (indicated) 5.9 (inferred)	8.7 (indicated) 6.9 (inferred)
Au ounces	291,000 (indicated) 54,000 (inferred)	240,000 (indicated) 38,000 (inferred)	201,000 (indicated) 27,000 (inferred)	169,000 (indicated) 19,000 (inferred)
Tonnes	1,820,000 (indicated) 450,000 (inferred)	1,180,000 (indicated) 240,000 (inferred)	830,000 (indicated) 140,000 (inferred)	610,000 (indicated) 80,000 (inferred)

- Main Zone extended ~200 m down plunge in phase 1 2021 drill program
- 50 km of mapped shear zones on the property remain largely untested
- **BASE Metallurgical Labs – 2017** Main Zone 94.6% Gravity + Cyanide Leach @ 300 micron grind
South Zone 85.8% Gravity + Cyanide Leach @ 300 micron grind
94.2% Gravity + Cyanide Leach @ 150 micron grind.

EXISTING INFRASTRUCTURE

Potential to reduce dilution and access resource



SATORI
RESOURCES

EXPLORATION: WHERE WE ARE GOING

Expand existing Main and South Zone resources

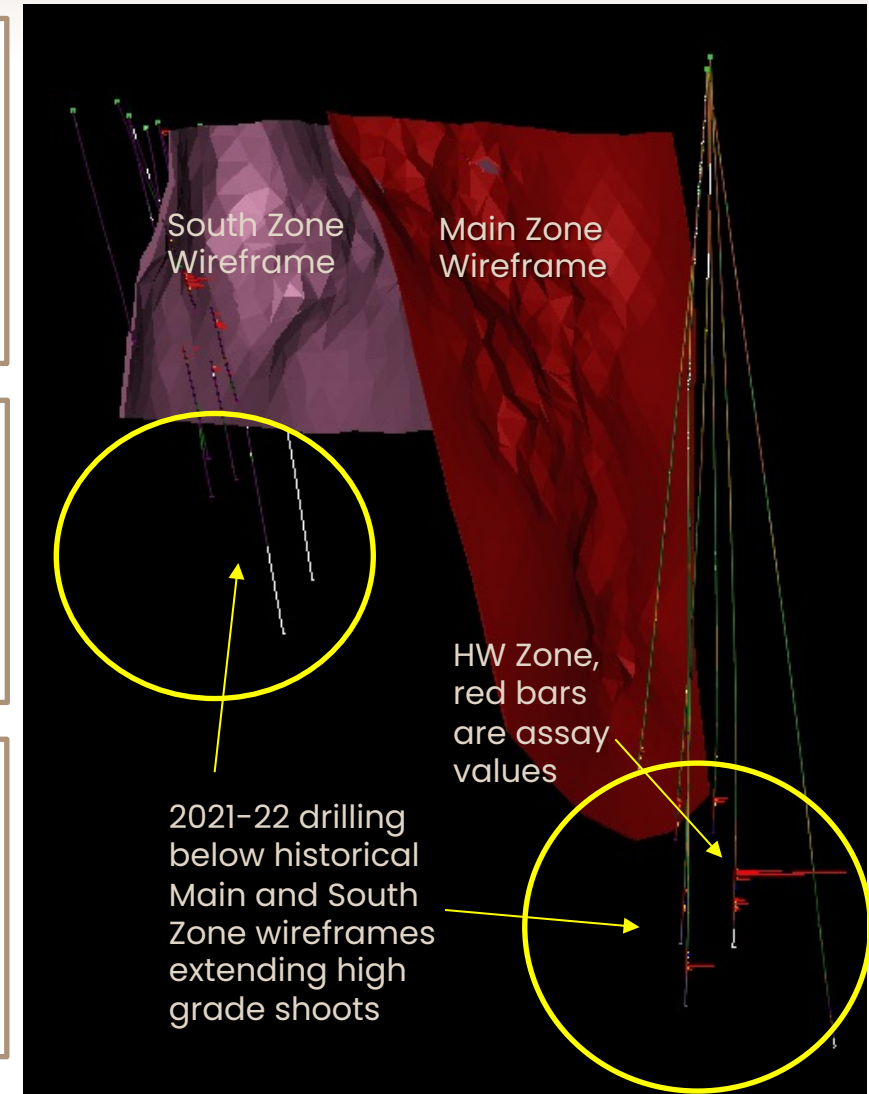
- Main Zone remains open down plunge
- South Zone remains open and is structurally similar to Main Zone

Interpreted New Hanging Wall Zone (in Main Zone)

- Second highest grade interval reported, TLMZ21-12 returned 23.76 g/t Au over 12.60 m including 47.56 g/t Au over 5.80 m

McFadden Zone (1km SE of mine site)

- Significant remote satellite target 1km SE of mine site
- Winter 2022 drilling pending assays



TARTAN LAKE ALL TIME HIGHEST VALUE INTERCEPTS

	Rank	Hole ID	From (m)	To (m)	Interval ⁽¹⁾	Grade (Au g/t)	Grade x Interval
Main	1	NUG324 ⁽³⁾	43.69	46.37	2.68	151.16	405.11
	2	TLMZ21-12	770.90	776.70	5.80	47.56	275.85
	3	NUG222 ⁽³⁾	41.84	45.00	3.16	83.34	263.35
	4	NAP43 ⁽³⁾	64.00	67.20	3.20	78.54	251.33
	5	NUG136 ⁽³⁾	51.43	55.19	3.76	58.00	218.08
	6	NUG221 ⁽³⁾	25.39	36.96	11.57	17.35	200.74
	7	NUG189 ⁽³⁾	90.58	99.12	8.54	23.25	198.56
	8	NAP86 ⁽³⁾	22Target1.59	231.83	10.24	18.77	192.20
	9	NAP112W4 ⁽³⁾	187.19	193.33	6.14	29.89	183.52
	10	NUG255 ⁽³⁾	17.39	20.08	2.69	67.31	181.06
South	1	TLSZ21-05	198.00	209.75	11.75	9.59	112.68
	2	NAP273 ⁽³⁾	128.28	138.32	10.04	10.34	103.81
	3	NAP294 ⁽³⁾	127.66	130.83	3.17	32.25	102.23
	4	NAP292 ⁽³⁾	137.60	141.30	3.70	20.84	77.11
	5	NUG014 ⁽³⁾	61.35	72.21	10.86	7.08	76.89
	6	NAP293 ⁽³⁾	125.30	137.32	12.02	5.74	68.99
	7	NAP227 ⁽³⁾	95.62	101.19	5.57	7.80	43.45
	8	NUG92 ⁽³⁾	48.95	55.52	6.57	6.57	43.16
	9	NUG86 ⁽³⁾	79.38	84.29	4.91	6.39	31.37
	10	NUG29 ⁽³⁾	66.21	68.87	2.66	11.29	30.03

SUMMARY OF PHASE ONE 2021 DRILL RESULTS

Target	Hole ID	From (m)	To (m)	Interval (m)	Grade (Au g/t)	Zone	
Main Zone	TLMZ21-01	807.00	820.00	13.00	3.58	Main	
		including	814.85	819.00	4.15	9.73	
		TLMZ21-W1	752.00	754.00	2.00	3.26	Main
		TLMZ21-02	630.90	652.90	22.00	1.98	Main
		including	632.80	636.20	3.40	5.88	
		TLMZ21-03	Hole lost short of target				
		TLMZ21-04	696.50	707.00	10.50	4.04	Main
		including	698.00	703.00	5.00	6.90	
		TLMZ21-11	715.25	720.50	5.25	2.15	HW
		and	732.15	738.95	6.80	5.53	Main
		including	736.85	738.95	2.10	8.87	
		TLMZ21-12	769.00	781.60	12.60	23.76	HW
		including	770.90	776.70	5.80	47.56	
		and	799.80	813.00	13.20	3.14	Main
	including	805.40	807.00	1.60	7.25		
South Zone	TLSZ21-05	190.30	218.10	27.80	4.76	South	
		including	198.00	209.75	11.75	9.59	
		TLSZ21-06	8.00	12.75	4.75	3.00	HW
		and	159.75	162.50	2.75	14.11	
		and	227.00	235.80	8.80	5.81	South
		including	231.00	235.80	4.80	8.79	
		TLSZ21-07	9.75	13.50	3.75	4.91	HW
		including	253.00	258.00	5.00	6.73	South
		TLSZ21-08	233.00	242.50	9.50	4.44	South
		including	234.00	238.00	4.00	8.03	
	TLSZ21-09	164.45	167.60	3.15	1.08	South	
	TLSZ21-10	No significant values				South	

RESOURCE EXPANSION POTENTIAL – MAIN ZONE

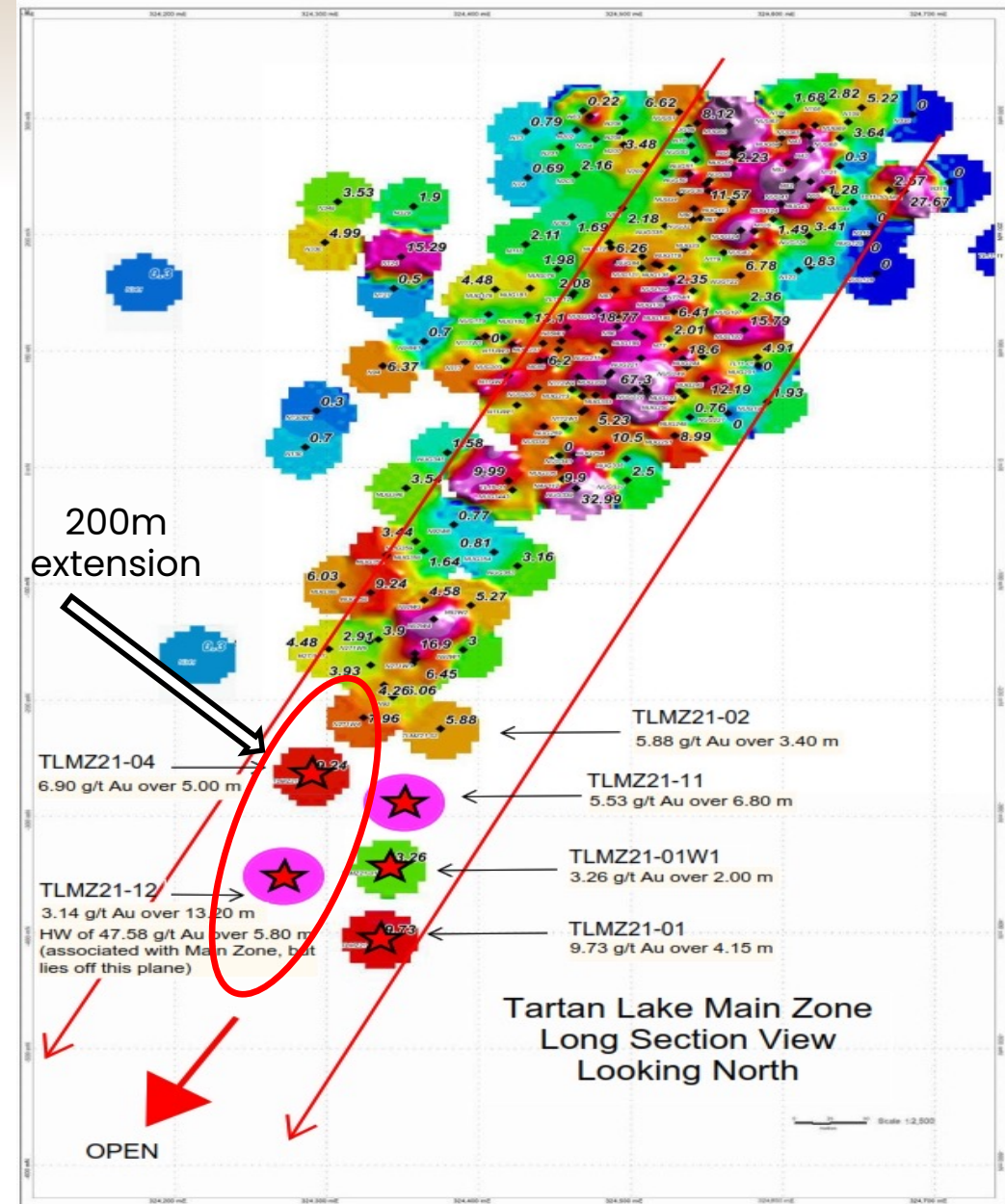
~ 200 m Extension

The Main Zone is a high-grade plunging ore-shoot that remains open at depth.

Satori's 2021 drill results extended the MZ down plunge by 200+ metres.

A potential new hanging wall zone was discovered.

The historical database at Tartan Lake includes of 500 holes (79,698 meters), Satori added 12 holes in 2021.



POTENTIAL NEW DISCOVERY

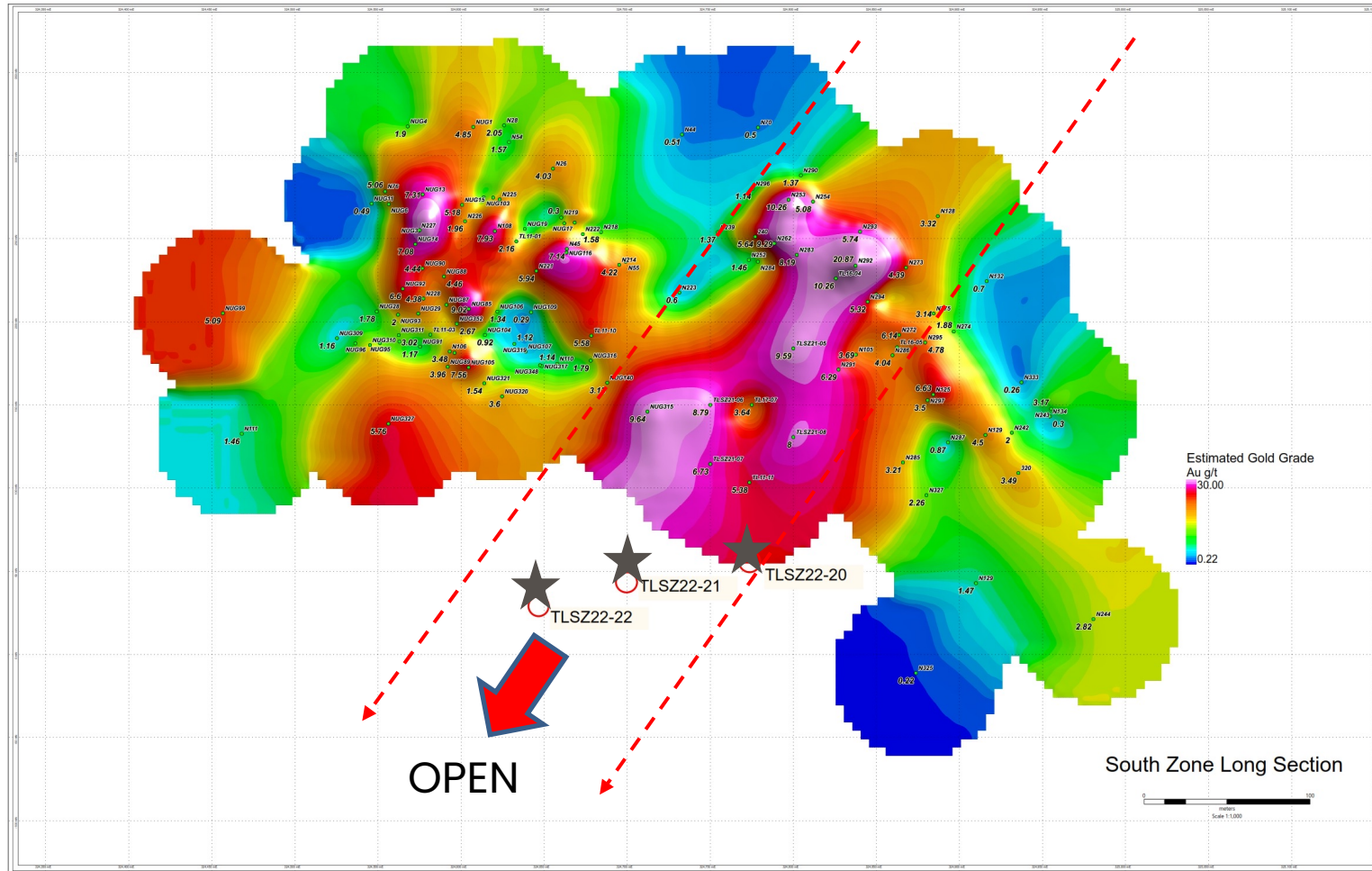
Found in the Hanging Wall of the Main Zone

Typical Main Zone with large quartz-carbonate-tourmaline+-fuchsite veining typically with 1-3% pyrite (upper photo)

Interpreted new Hanging Wall mineralization with much smaller wispy, folded and "torn up" quartz veins and higher sulphide, up to 10-15% pyrite (lower photo)



RESOURCE EXPANSION POTENTIAL – SOUTH ZONE



South Zone remains open at depth

2021 defined a new potential high grade shoot

- ★ 2022 drilling to test down plunge potential of the high grade shoot (assays pending)

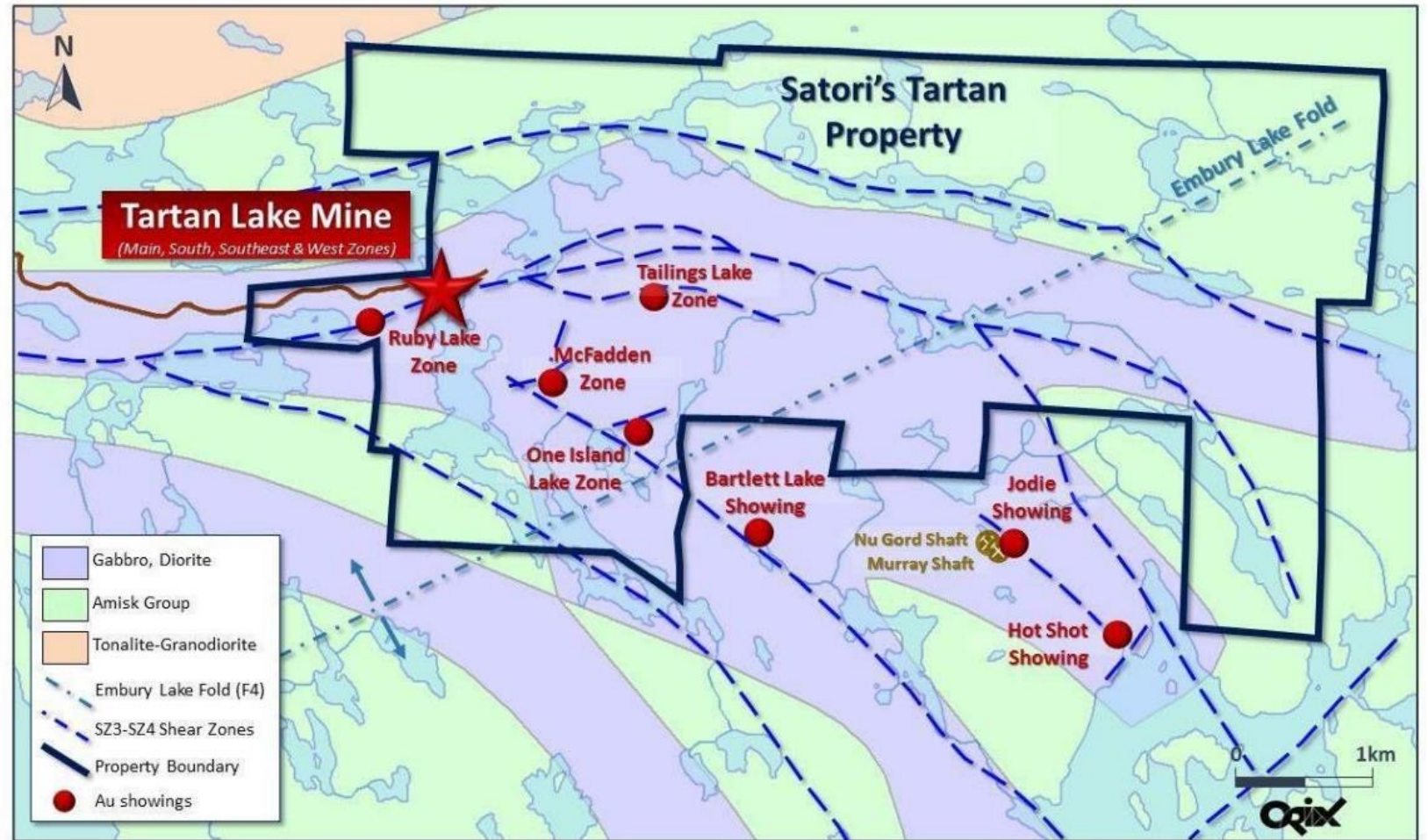
BLUE SKY TARGETS ACROSS PROPERTY

Axial plane of regional Embury Lake Fold crosses property

Regional NW - SE striking shear structures that trace into the mine sequence

Follow up new 2022 IP Survey targets including large chargeability anomaly in NE having VMS potential

NW-SE trending shear zone crosses through Satori's claims, as well as off the property towards the Bartlett Lake Showing



CONTACT INFORMATION



SATORI RESOURCES INC.

TSX-V: BUD | OTCQB: STRRF

401 Bay Street, Suite 2702

Toronto, Ontario, Canada M5H 2Y4

Email: info@satoriresources.ca

Overlooked Since 1989 | Minimal Expenditures to Date | Road Accessible | High Grade Gold Mining Jurisdiction